



**First Friday each Quarter:
12:00 - 1:30 pm. Have lunch.**

April 1: Current AD in New England & Getting Organized: What topics do you want covered?

July 1: Topic to be determined

October 7: Topic TBD

Dial:

712-832-8300

Enter code

344378 ("digest")

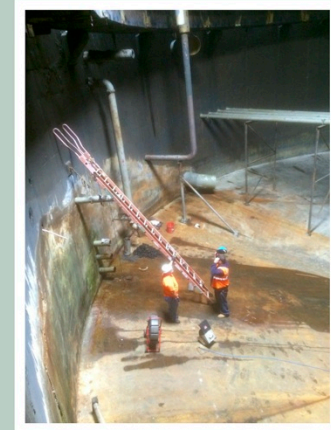
Go to url: <https://join.me/nebiosolids>



Produced by:

with help from NHDES.

[www.nebiosolids.org/
ne-digestion-roundtable](http://www.nebiosolids.org/ne-digestion-roundtable)
603-323-7654
info@nebiosolids.org



Northeast Digestion Roundtable 2016

Quarterly webinars to share technical operations experiences & advance best practices regarding anaerobic digestion in this region.

Proposed topics

- Tracking 503/regulatory compliance: VS destruction – food waste impacts on achieving compliance. Check with CA contacts – regulatory issues re accepting food waste, e.g. EBMUD
- Digester upsets
 - Foaming, rapid rise, overflows
 - VA/alkalinity ratios – any negative ranges?
- Maintenance: how often, procedure, grit build-up, ragging
- Struvite / nutrient recovery
- Supplemental feedstocks: high-strength, food, FOG, etc.
 - Markets
 - Vetting feedstocks
 - Managing (e.g. avoiding clogs) & preparation of feedstocks (slurrying)
 - Feeding regimen

Proposed topics

- Modes of digestion: meso, thermo, psychrophilic, high solids v. low solids
- Biogas management – conditioning, storage
- CHP – technologies
- Electrical interconnections – Bourne project failed due to inability to agree on electricity payment by utility
- AD biosolids not being as well-received by farmers? Due to lower N.

Digestion in this region

➤ Farms

- Exeter Agri-Energy at Stonyvale Farm, Maine
- ~dozen in VT – cow power-see their website
- 3 in MA (Jordan, Pine Island, Barstow's in Hadley)
- ~2 in CT

➤ Merchant/Stand-alone

- Blue Sphere, Johnston, RI – starting up in 2016
- Village Green Ventures, Brunswick, ME – taking some material
- Bourne, MA project scrapped for now
- Crapo Hill landfill – New Bedford – in development
- Southington, CT – Turning Earth AD in development, and a second one too?
- Another project in Hartford area (in development)
- 1 in St. André, NB, just over border from ME – CH₄ system – merchant, industrial food waste, cow manure

➤ Municipal Wastewater

- See biogasdata.org → ABC map
- See NEBRA spreadsheet

Municipal digestion in this region

- NY – lots
- New England has relatively few
 - CT - ~10
 - MA – ~6
 - ME – 1
 - NH – 3
 - RI – 1
 - VT - 13
- Quebec – several
 - Ste. Hyacinthe – co-digestion
 - Quebec City moving to AD from incineration
 - Southern Ontario – Harvest Power developed, then sold to Stormfisher Biogas

Resources: General

- NEBRA website:
<http://www.nebiosolids.org/resources/>
- American Biogas Council:
<https://www.americanbiogascouncil.org/>
- WEF biogas data:
<http://www.biogasdata.org>
- EPA AgStar:
<https://www.epa.gov/agstar>
<https://www.epa.gov/agstar/learn-about-biogas-recovery>
- EPA Region 9:
<https://archive.epa.gov/region9/organics/web/html/index-6.html>

What are the particular challenges?

Roundtable discussion:

➔ In New England / Northeast?

What are the particular challenges?

➤ At your facility?

➤ Technical

- Accurately measuring flows; avoiding grease build-up on meters. EJ: cleaning monthly; watching data to verify measurements
- Grit accumulation; how often is cleaning needed?
 - 4 years, 20% volume taken up by grit, Exeter Agri
 - 20 years, 20% full of grit – Fairfield, CT
 - Essex Jct: rags more of problem; changing out screening more regularly; 5 year frequency with headworks grinding system
 - Essex Jct: local contractor cleaning (P & H Senesac, Milton, VT); proper mixing is key to avoid congealing grease. Chopper pump hydraulically driven & fire hose
 - Need to keep rags out. Watching VS destruction data can help indicate issue.

What are the particular challenges?

- At your facility?
 - Technical
 - Feedstock preparation & receiving facilities
 - WM food scrap prep facility in Charlestown, MA
 - Under construction; to feed GLSD, starting pilot this summer
 - GLSD: 2 engines & 4th digestion to be added
 - GLSD cleaned digesters recently
 - Grind2Energy at Whole Foods markets in Boston area
 - Exeter Agri-Energy has a slurrying machine
 - Delivering by tanker truck to LAWPCA; working for LAWPCA so far. Grease in slurry may exacerbate FOG issues at WRRF (meter coating)
 - LAWPCA accepting at 2 cents/gal. LAWPCA appreciates high-energy feedstocks that don't generate too much additional solids. LAWPCA also interested in helping Maine achieve management of wet organics.
 - Exeter has brokering waste division that brings in more feedstock than they can handle at their facility.
 - Stopping cantilever style pump at receiving station can lead to it not working; caution.

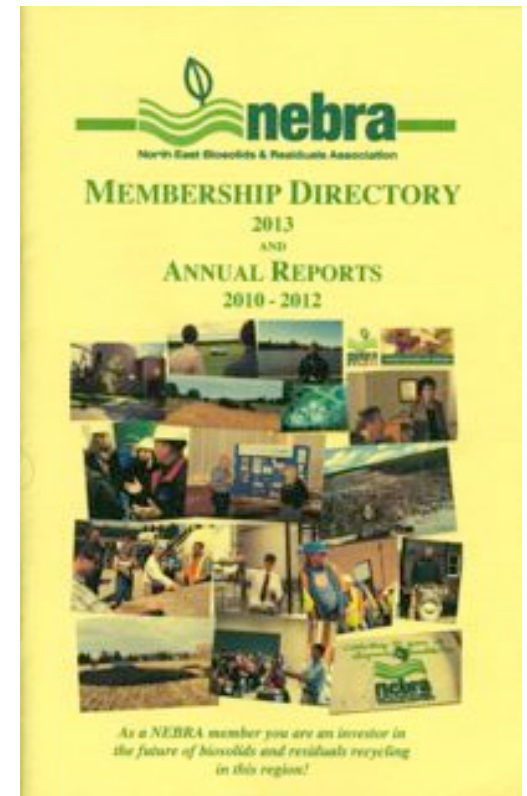
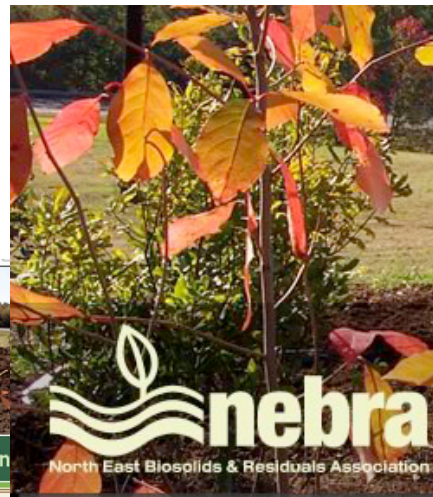
What NEBRA Does For You

Tours, workshops, conferences, outreach to advance best practices & understanding to advance the recycling of biosolids & other organic residuals in New England & eastern Canada.



What NEBRA Does For You

➔ Tracking & sharing research, news, legislation, & regulation




nebra mail
Distilled biosolids and residuals news for New England and eastern

November 2010

31	1	2	3	4	5	6
7	8	9	10	11	12	13
14	15	16	17	18	19	20
21	22	23	24	25	26	27
28	29	30	1	2	3	4
5	6	7	8	9	10	11

CALENDAR...
Here comes 2011!

It's History - Except for Presentations Online!
North East Residuals & Biosolids Conference
a wrap

The energy was high at this year's annual northeast residuals conference. It began on November 9th with a record turnout at the optional tour of the Greater Lawrence Sanitary District and the adjoining NEFCO-operated biosolids pelletizing facility.

A sell-out crowd attended the tour at GLSD & the NEFCO

We depend on members. Join.

NEBRAMail – free email newsletter; sign up at nebiosolids.org
On Twitter: [@nebiosolids](https://twitter.com/nebiosolids)

nebiosolids.org

Sign up for free *NEBRAMail*:
left side of nebiosolids.org

**NEBRA is a resource for you.
Support it.**

Ned Beecher

ned.beecher@nebiosolids.org

603-323-7654

